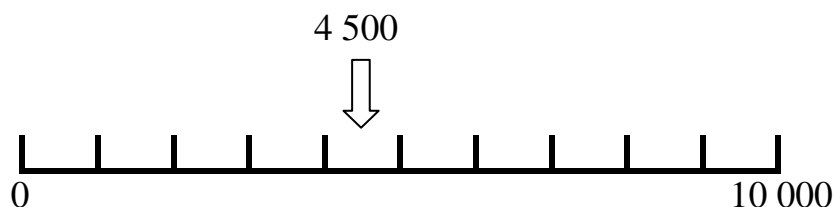


6202-01 Estimating on a number line (pg 1)

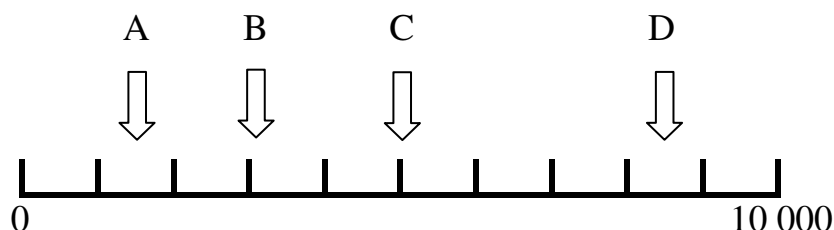
Free resources from Mathsblog in association with www.mathsgogogo.co.uk © Mathsgogogo

1. This line shows the numbers up to 10 000 divided into thousands.
Draw an arrow to show the following numbers (the first has been done for you).

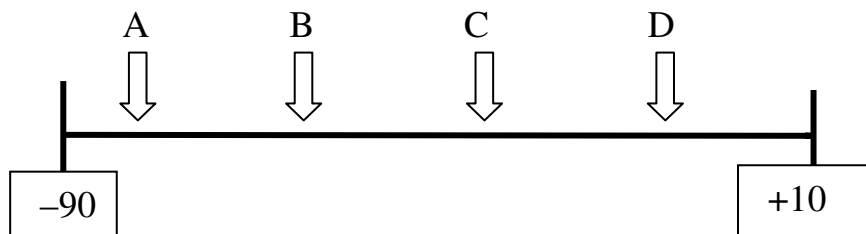
5 000, 7 500, 3 200, 1 000, 9 900



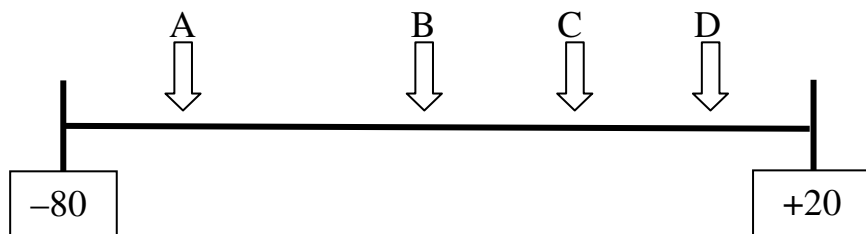
2. Where are the arrows pointing on this line?



3. Where are the arrows pointing on this line?



4. Where are the arrows pointing on this line?



6202-01 Estimating on a number line (pg 1) Answers

Free resources from Mathsblog in association with www.mathsgogogo.co.uk © Mathsgogogo

- | | | | |
|------------|---------|---------|---------|
| 2. A 1 500 | B 3 100 | C 5 000 | D 8 500 |
| 3. A -80 | B -58 | C -34 | D -10 |
| 4. A -63 | B -32 | C -12 | D 6 |